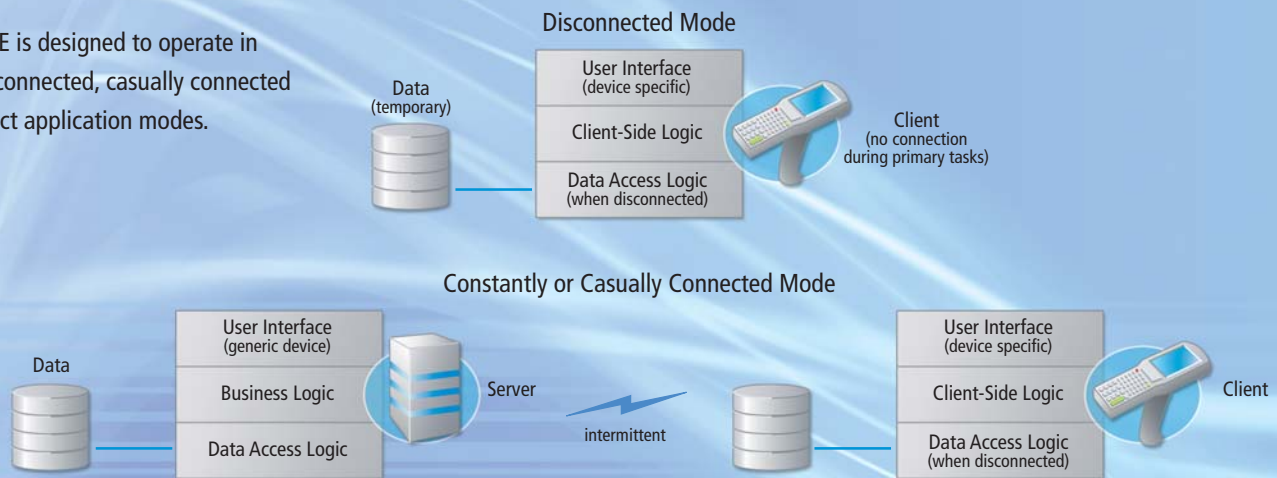


Create Dynamic Commercial Wireless Applications

Wavelink Studio EDGE™ is the industry's most advanced commercial wireless application development solution. Studio EDGE provides application developers with a powerful set of tools to rapidly develop mission-critical applications running in a Java™ environment. Wavelink Studio EDGE radically reduces the time to develop, deploy, and manage wireless applications for supply chain management, inventory control and warehouse management, retail operations and other industrial wireless applications using ruggedized wireless devices.

Studio EDGE is designed to operate in constantly connected, casually connected or disconnect application modes.



Easy-to-use Graphical User Interface

The Wavelink Studio EDGE Designer simplifies the wireless application development process by providing a single project-based graphical user interface that speeds application development and supports multiple device types. The Studio EDGE integrated development environment (IDE) allows developers to easily build all required screens for a wireless application.

Become Hardware and OS Independent

Studio EDGE gives you the freedom to create wireless applications for the broadest range of mobile devices – from traditional industrial-grade devices and scanners to next generation PDAs from industry leaders such as Symbol, Intermec, PSC and others. Studio EDGE provides support for multiple operating systems, from DOS to Windows CE and Pocket PC, allowing for smooth migration from legacy to newer devices.

J2EE Support Provides Greater Flexibility and Independence

Wavelink Studio EDGE wireless applications can be deployed and administered using any standard J2EE application server. J2EE application servers currently certified by Studio EDGE include IBM WebSphere, BEA WebLogic, Apache Tomcat and others.

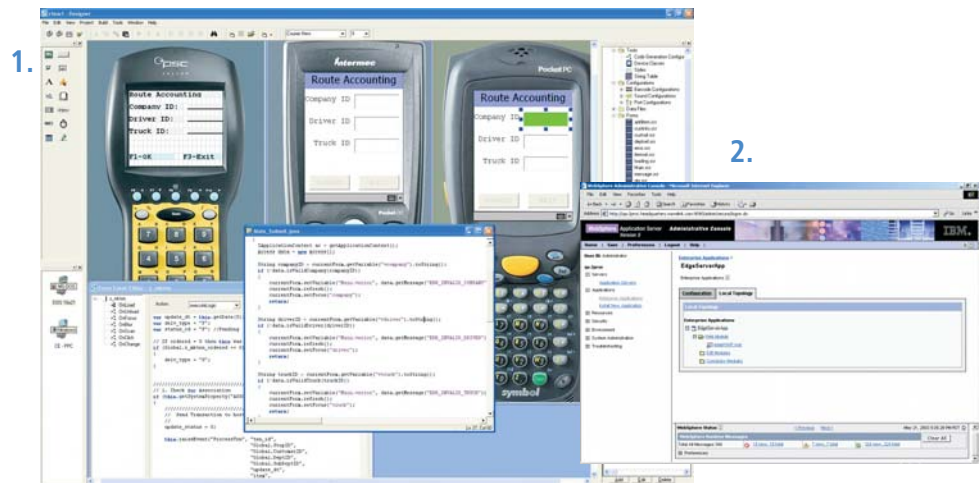
Support Constantly, Casually Connected and Disconnected Applications

Using Studio EDGE, applications can be run in a constantly connected, casually connected or disconnected mode (i.e. batch mode). With Wavelink Studio EDGE, devices can move in and out of a wireless network while maintaining full applications processing capabilities thereby reducing device downtime and improving user flexibility, ideal for WLAN, WWAN and roaming between hybrid WLAN/WWAN environments.

STUDIO EDGE



1. The Studio EDGE Designer: Provides the most comprehensive solution for developing commercial-grade applications for ruggedized devices. The designer provides complete design, test and emulation tools.
2. Integrates with J2EE Servers: Allows for application deployment and administration on leading J2EE servers.



Key Features

Studio EDGE Designer - Using a single project and code base, developers can design once and apply to multiple device types, using convenient tiling views and graphical design components. Includes graphical buttons, hot keys, and other input fields for the device interface, and routines for integrating events and data from other applications and databases.

Design, Test and Emulator Suite - Within the Designer, tools are available for complete build, test and emulation of the application. Includes compiler, emulators, and J2EE container for testing of applications in near real-world environment before production deployment.

Broad Client Compatibility - Wavelink Studio EDGE clients support the widest range of commercial-grade devices including Windows CE, Pocket PC and DOS devices from Intermec, Symbol, PSC and others.

Constantly and Casually Connected or Disconnected Applications - Applications designed using Studio EDGE can accommodate a range of network connectivity scenarios, allowing the application and user to continue to function irrespective of gaps in network coverage for the maximum productivity and versatility. Studio clients utilize a local processing engine and data store for operations in offline or batch mode.

Browser HTML Content Support - Incorporate existing HTML code into Studio EDGE applications, providing all the benefits of browser-based functionality, such as display of HTML pages, plus the advantages of server side-control, device-side and peripheral integration and casually connected or disconnected support.

Uniform Device Controls - Abstracts developers from vendor-specific implementations of device controls, including scanners, radios, hotspots, signature capture buttons and other controls, by creating a consistent programming interface across all devices.

Legacy Application Support - New applications deployed using Studio EDGE and Studio clients can run side by side with earlier versions of Wavelink Studio applications, allowing for investments to be preserved while new applications are introduced in new Java environments. All Studio EDGE clients are backwards compatible.

System Requirements

The Studio EDGE Designer requires the following hardware and software components to operate effectively:

- Windows 2000, XP
- A Pentium 166MHz or faster processor
- 64 MB of physical RAM (128 MB if RAM recommended)
- 250 MB of available hard disk space

The following components are included with the installation of the Designer:

- Java 2 Runtime Environment (JRE), version 1.3.1_03 or later
- Ant version 1.5

Server Requirements - The server must be a supported Java servlet container. Examples of servlet containers include IBM WebSphere, BEA WebLogic, and Tomcat. The hardware requirements for the server are specific to the server type. The Tomcat server is included in the installation.

Mobile Device Requirements - The mobile device must be a supported device running the Studio Client, versions 5.2.4.40 (Windows CE) or 5.2.4.24 (DOS) or higher.



11335 NE 122nd Way, Suite 200 Kirkland, WA 98034 USA
Sales and Support: 1-888-697-WAVE (9283)
International: +1-425-823-0111 UK/EMEA: +44-870-351-8564

WWW.WAVELINK.COM